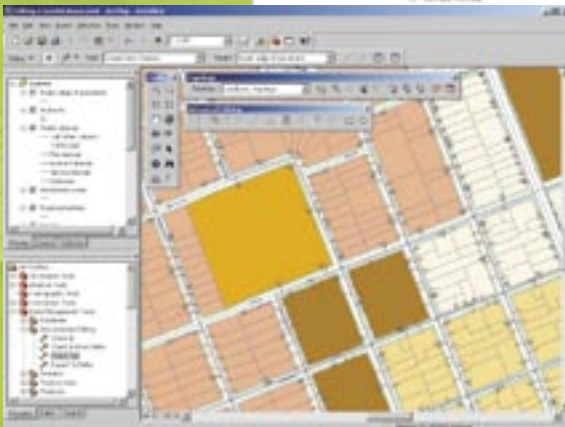
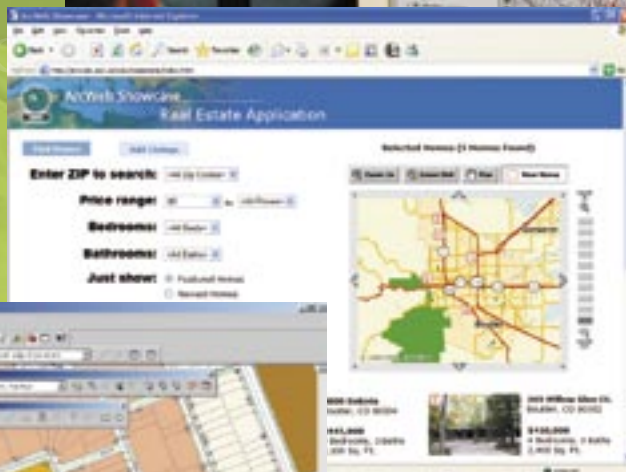


GISTEC

TRAINING CENTER



2005-2006

Training Schedule 2005-2006

A Message from the Training Coordinator

Dear Valued Client,

We at GISTEC believe that continuous training is most essential for those who seek to distinguish themselves in their professional work.

We would like to offer you training courses ranging from introductory to advanced ones on a variety of topics pertaining to the latest ESRI technology to keep you updated in this rapidly growing field.

We are proud and very pleased to announce the opening of our second Training Facility at GISTEC premises. These well-equipped training facilities, backed by a pool of highly qualified and experienced instructors, ensure that our students get the best quality training needed to excel in their day-to-day tasks and advance in their careers.

Since January 2005, over 200 participants from different governmental and private organizations in UAE and GCC have attended our training programs.

With more than 16 ESRI training courses on offer starting from Nov 12, 2005 till the yearend, and 28 ESRI training courses scheduled for the 1st quarter of 2006, we hope that our upcoming program caters to your organizations' requirements.

You can register for the courses by faxing the registration form provided on the last page of the brochure to me, or you can access our website www.gistec.com and register online.

Your feedback is extremely important and valuable to us in enhancing the quality of our training; please do not hesitate to contact me for any inquiries.

We look forward to welcoming you at the training facility!

Sincerely,



Khalida Al-Kurdi

Email: khalida.alkurdi@gistec.com

Tel: +971 6 575 0055

Fax: +971 6 575 0404



Learning Pathways

A learning pathway is a logical collection of ESRI training courses designed to help ESRI software users achieve success. Each training pathway provides high-quality, relevant training on a particular subject area.

Those completing a learning pathway will acquire knowledge and skills that can be applied directly to their job.

- GIS Analysis Pathway is designed for GIS analysts and others performing vector and raster analysis.
- GIS Data Production and Editing Pathway is designed for GIS technicians, specialists, and others responsible for creating and editing spatial data.
- GIS Administration Pathway is designed for database administrators who need to manage multi-user geodatabases and their client applications.
- GIS Development Pathway is designed for experienced programmers who want to develop their own applications.
- Geodatabase Design Pathway is designed for GIS data modelers, database designers, and analysts who are experienced ArcGIS users.

In each pathway there are mandatory courses to be completed and one of the optional courses to be completed. These are indicated with the following legend:

- ✓ : complete these mandatory courses for the pathway
- * : complete at least one of these courses for the pathway

After completing a learning pathway, participants will receive a certificate of completion.

		Pathways					
S/N	Course	Number of Hours	GIS Analysis	GIS Data Production and Editing	GIS Administration	GIS Development	Geodatabase design
1	Introduction to ArcGIS I	16	✓	✓	✓	✓	✓
2	Introduction to ArcGIS II	24	✓	✓	✓	✓	✓
3	Geodatabase Design Concepts	16					✓
4	Modeling Geodatabases Using CASE Tools	24					✓
5	Building Geodatabases I	24		✓			*
6	Building Geodatabases II	16		*			
7	Advanced Editing in ArcGIS	32		✓			
8	Data Production & Editing Techniques	16		✓			
9	Creating & Editing Parcels with ArcGIS	16		*			
10	Cartography with ArcGIS	24		*			
11	QA/QC for GIS Data Using ArcGIS Desktop	16		*			
12	Advanced Analysis with ArcGIS	24	*				
13	Working with ArcGIS Network Analyst	16	*				
14	Working with ArcGIS Spatial Analyst	24	*				
15	Extending ArcGIS Desktop Applications	24				✓	
16	Introduction to Programming ArcObjects with VBA	40				✓	
17	Developing Applications with ArcGIS Engine	16				*	
18	Developing Applications with ArcGIS Server	16				*	
19	Introduction to Geoprocessing Using Python	16		*			
20	Writing Advanced Geoprocessing Scripts using Python	24				*	
21	ArcSDE Administration for Oracle	40			*		
22	ArcSDE Administration for Oracle Server	40			*		
23	Managing a Versioned Geodatabase	24			*		
24	Introduction to ArcIMS	16			*		
25	Customizing ArcIMS Using HTML and JavaScript	24				*	
Minimum hours to complete a pathway →			56	128	56	120	104

Training Schedule 2005

Course	Date	Duration	Cost	Location
Introduction to ArcGIS I & II	Nov 12-16	5 days	\$2,000	GISTEC, Sharjah
Introduction to ArcIMS	Nov 12-13	2 days	\$1,200	GISTEC, Sharjah
Customizing ArcIMS Using HTML and JavaScript	Nov 14-16	3 days	\$1,350	GISTEC, Sharjah
Advanced Analysis with ArcGIS	Nov 19-21	3 days	\$1,350	GISTEC, Sharjah
Creating and Editing Parcels with ArcGIS	Nov 22-23	2 days	\$1,200	GISTEC, Sharjah
Introduction to ArcGIS I & II	Nov 26-30	5 days	\$2,000	GISTEC, Sharjah
ArcSDE Administration for Oracle	Nov 26-30	5 days	\$2,500	GISTEC, Sharjah
Managing a Versioned Geodatabase	Dec 4-6	3 days	\$1,350	GISTEC, Sharjah
Working with ArcGIS Spatial Analyst	Dec 5-7	3 days	\$1,350	GISTEC, Sharjah
Introduction to ArcGIS I & II	Dec 10-14	5 days	\$2,000	GISTEC, Sharjah
Introduction to Programming ArcObjects with VBA	Dec 10-14	5 days	\$2,000	GISTEC, Sharjah
Building Geodatabases I & II	Dec 17-21	5 days	\$2,000	GISTEC, Sharjah
Introduction to ArcIMS	Dec 17-18	2 days	\$1,200	GISTEC, Sharjah
Customizing ArcIMS Using HTML and JavaScript	Dec 19-21	3 days	\$1,350	GISTEC, Sharjah
Working with ArcGIS Network Analyst	Dec 24-25	2 days	\$1,200	GISTEC, Sharjah
Learning ArcGIS 3D Analyst	Dec 26-27	2 days	\$1,200	GISTEC, Sharjah
Introduction to GeoProcessing Scripts Using Python	Dec 24-25	2 days	\$1,200	GISTEC, Sharjah
Geodatabase Design Concepts	Dec 24-25	2 days	\$1,200	GISTEC, Sharjah
Modelling Geodatabases Using CASE Tools	Dec 26-28	3 days	\$1,350	GISTEC, Sharjah
Cartography with ArcGIS	Dec 26-28	3 days	\$1,500	GISTEC, Sharjah

Prices and schedule are subject to change without prior notice.
GISTEC reserves the right to cancel any course, in which case a full refund is given to registered participants.

Training Schedule 2006

Course	Date	Duration	Cost	Venue
Introduction to ArcGIS I & II	Jan 14-18	5 days	2,000	GISTEC , Sharjah
Introduction to Programming ArcObjects with VBA	Jan 14-18	5 days	2,000	GISTEC , Sharjah
Building Geodatabases I & II	Jan 21-25	5 days	2,000	GISTEC , Sharjah
Extending ArcGIS Desktop Applications	Jan 21-23	3 days	1,350	GISTEC , Sharjah
Advanced Editing in ArcGIS	Jan 28-31	4 days	1,800	GISTEC , Sharjah
Introduction to ArcGIS I & II	Feb 4-8	5 days	2,000	GISTEC , Sharjah
Cartography with ArcGIS	Feb 11-13	3 days	1,500	GISTEC , Sharjah
Introduction to ArcIMS	Feb 11-12	2 days	1,200	GISTEC , Sharjah
Customizing ArcIMS Using HTML and JavaScript	Feb 13-16	3 days	1,350	GISTEC , Sharjah
Advanced Analysis with ArcGIS	Feb 18-20	3 days	1,350	GISTEC , Sharjah
ArcSDE Administration for Oracle	Feb 18-22	5 days	2,500	GISTEC , Sharjah
Creating and Editing Parcels with ArcGIS	Feb 25-26	2 days	1,200	GISTEC , Sharjah
Geodatabase Design Concepts	Feb 25-26	2 days	1,200	GISTEC , Sharjah
Modelling Geodatabases Using CASE Tools	Feb 27-Mar 1	3 days	1,350	GISTEC , Sharjah
Introduction to ArcGIS I & II	Mar 4-8	5 days	2,000	GISTEC , Sharjah
Building Geodatabases I & II	Mar 11-15	5 days	2,000	GISTEC , Sharjah
QA/QC for GIS Data Using ArcGIS Desktop	Mar 11-12	2 days	1,200	GISTEC , Sharjah
Cartography with ArcGIS	Mar 18-20	3 days	1,350	GISTEC , Sharjah
Developing Applications with ArcGIS Server	Mar 21-22	2 days	1,200	GISTEC , Sharjah
Developing Applications with ArcGIS Engine	Mar 25-26	2 days	1,200	GISTEC , Sharjah
Introduction to Programming ArcObjects with VBA	Mar 25-29	5 days	2,000	GISTEC , Sharjah
Introduction to ArcGIS I & II	Apr 1-5	5 days	2,000	GISTEC , Sharjah
Advanced Editing in ArcGIS	Apr 8-11	4 days	1,800	GISTEC , Sharjah
Writing Advanced Geoprocessing Scripts Using Python	Apr 8-10	3 days	1,350	GISTEC , Sharjah
ArcSDE Administration for SQL Server	Apr 15-19	5 days	2,000	GISTEC , Sharjah
Working with ArcGIS Network Analyst	Apr 15-16	2 days	1,200	GISTEC , Sharjah
Working with ArcGIS Spatial Analyst	Apr 17-19	3 days	1,350	GISTEC , Sharjah
Introduction to ArcGIS I & II	Apr 22-26	5 days	2,000	GISTEC , Sharjah

Registration Instructions

How to Register

A completed found on this brochure to GISTEC. Registrations are processed on a first-come, first-served basis so fax your registration early.

Payment

Payment
be made
GISTEC:

Account Name : Gulf Survey & Engineering Services - GISTEC
Account Number : 040 135 808 211 (US Dollars) or 040 135 808 003 (UAE Dirhams)
Bank : HSBC Bank Middle East, PO Box 25, Sharjah, UAE

Course costs include :

Course Certificate
Course Materials
Refreshments & Lunch

Cancellation & Substitution

If you reg
written noti
course fees wi
the right to cancel any course; in this case a full refund will be given.

Questions?

Should you have any questions, comments, or requires further information, please contact Miss Khalida Al-Kurdi.

Registration Form

1. Contact Information (Please fill-up one registration form per person)

Name	PO Box/Address
Position	City
Organization	Country
Phone	Fax
Email	

2. Training Courses

Course	Course Date	Price	Total

3. Payment Information

- Bank Transfer (Fax a copy to GISTEC)
 Cheque

Cheque Amount _____ Cheque No. _____
Bank _____ Date _____

I understand and agree to the terms and conditions of this application.
I am aware of, and have met all course pre-requisites.

Signature

The facts you need in 25 seconds*

Now all the accurate data you need can be yours twice as fast as before with the revolutionary new HP Designjet 4000 Printer. It uses unique HP Double Swath and HP Professional Color Technologies to double your performance¹ without compromising line accuracy or image quality. All from a new HP Designjet that's been built to be as reliable as every HP Large Format Printer in our range. Combine this latest technology with HP Inks, Printheads and Large Format Papers and you have the fastest, most efficient way to share the most complicated ideas with the rest of your team. Get up to speed now at www.hp.com/me/dj4000/map

HP DESIGNJET 4000/PS

- 100 A1 per hour** with HP Double Swath technology
- 2400 x 1200 dpi maximum resolution
- Embedded processor and web server
- 256 MB (expandable to 512 MB), 40 GB HDD
- Control operational costs through Job Accounting features
- Supports HP-GL/2, HP RTL, TIFF, JPEG, CALS G4 and Adobe® PostScript® 3,^{***} PDF 1.5 on PS model

HP INKS & MEDIA

- Consistently outstanding results with HP original supplies
- Choose from a complete set of No. 90 ink supplies to match your usage needs and benefit from lower running cost options
- No trimming and cutting time wasted with new HP European standard format media rolls
- Rolls up to 91 m long and 42" (1.06 m) wide

To watch a live product demonstration with consultation****, register today at www.hp.com/me/techcentre

Includes Acrobat Professional Software

CALL

UAE: 800 4910

KSA: 800 8971 444

Bahrain: 800 00 171

Egypt: 02 532 5222

Other Countries: +971 4 391 5999

CLICK

www.hp.com/me/dj4000/map



*A1 mechanical printing time. **Multi-copy printing. ***Printed in Fast mode on HP Bright White Inkjet Paper (Bond). Speed indicated is maximum printer speed. ¹ Compared to any HP Designjet 600/700/800/1000 Printer series. Adobe and the Adobe logo are either registered trademarks or trademarks of Adobe Systems Incorporated in the United States and/or other countries. Adobe® PostScript® 3™ are trademarks of Adobe Systems Incorporated © 2004 Hewlett-Packard Development Company, L.P. All rights reserved. ****Offer valid for businesses, in the UAE only. Subject to availability.



GISTEC
TRAINING CENTER

GISTEC
TRAINING CENTER

GISTEC
TRAINING CENTER

GISTEC
TRAINING CENTER

Training Schedule

GISTEC

1608-Al Batha Tower
283-Corniche Street
PO Box 5026, Sharjah
United Arab Emirates

Tel: + 971-6-575 0055
Fax: +971-6-575 0404
Email: info@gistec.com

Web: www.gistec.com
Geo: N25.3341 E55.3894

Gulf Survey & Engineering Services-GISTEC License No. 539 dated March 21, 1976